

# MONTHLY MEMBERSHIP PROGRESS REPORT

LOCATION COLORADO

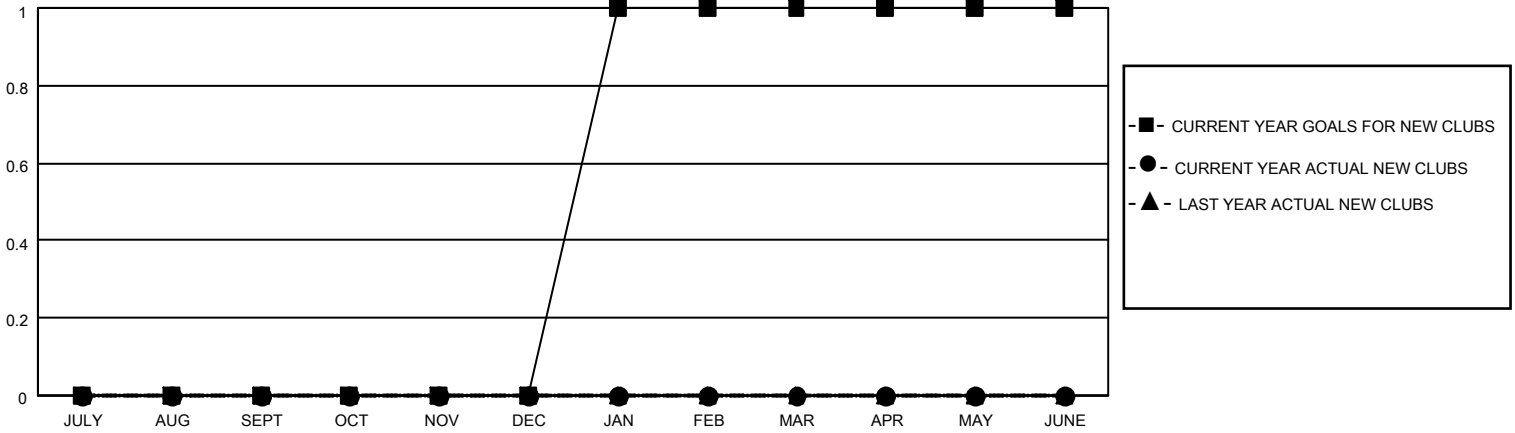
District 6 C

Results as of: 11/30/2021

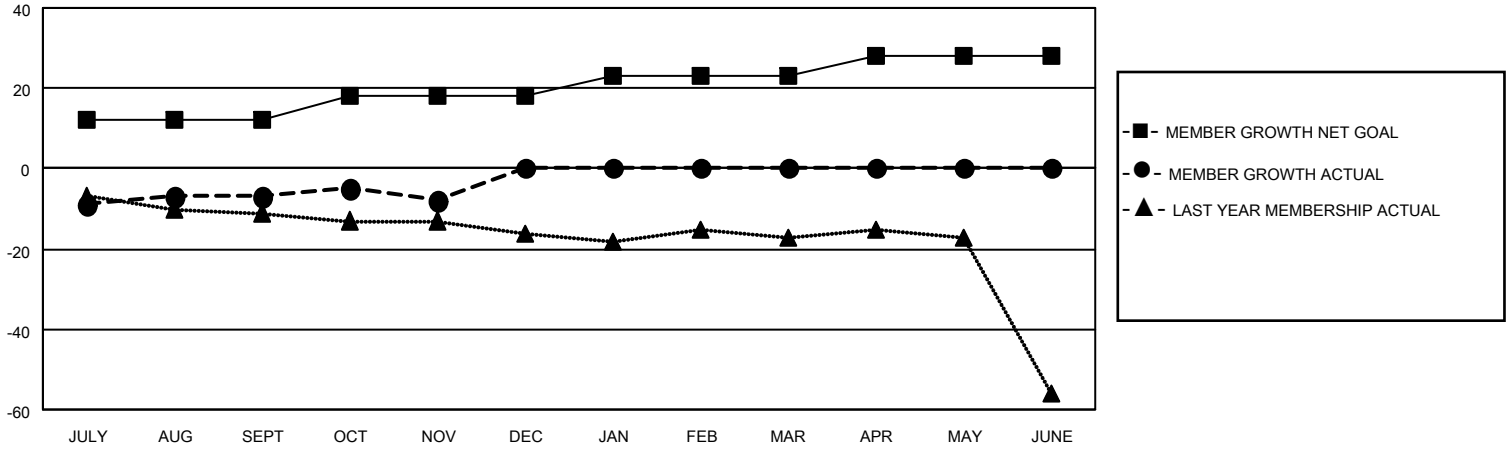
Clubs			
RESULTS FOR 2021-2022			
QUARTER	NEW CLUB GOAL	NEW CLUBS	DROPPED CLUBS
JULY/AUG/SEPT	0	0	2
OCT/NOV/DEC	0	0	0
JAN/FEB/MAR	1	0	0
APR/MAY/JUNE	0	0	0

Members			
RESULTS FOR 2021-2022			
QUARTER	MEMBER GROWTH NET GOAL	MEMBER GROWTH ACTUAL	DROPPED MEMBERS ACTUAL (including transfers)
JULY/AUG/SEPT	12	7	12
OCT/NOV/DEC	6	5	6
JAN/FEB/MAR	5	0	0
APR/MAY/JUNE	5	0	0

**GOALS AND ACTUAL NEW CLUBS CUMULATIVE**



**GOALS AND ACTUAL MEMBERS CUMULATIVE**



DROPPED CLUBS: 2	
<u>DROPPED MEMBERS</u>	
DECEASED	3
CLUB CANCELLED	0
OTHER	15
<b>TOTAL</b>	<b>18</b>

7 CLUBS OF 28 ADDED 1 OR MORE NEW MEMBERS

[CLICK HERE FOR CUMULATIVE MEMBERSHIP DATA](#)

<u>GENDER DISTRIBUTION</u>	
MALE	303 (58.27%)
FEMALE	217 (41.73%)
NON BINARY	0 (0.00%)
PREFER NOT TO ANSWER	0 (0.00%)
<b>TOTAL FAMILY UNIT MEMBERS</b>	<b>82</b>
<b>FAMILY MEMBERS PAYING HALF DUES</b>	<b>42</b>